

*Wollensak*  
PHOTO LENSES



4/00

# MEETING PRESENT DAY DEMANDS IN PHOTOGRAPHY

With consistent earnestness and ambition to meet the new day demands in photography, we have developed a line of still and motion picture lenses that is complete for every need. The skillful precision and care that enter into the manufacturing of each lens permit us to offer superior quality. Only high grade artisans, best materials and the finest optical glass procurable enter into the making of Wollensak lenses.

Since 1899 Wollensak lenses have occupied an enviable position in the field and are in constant use by the better photographers throughout the world who manifest keen delight and complete satisfaction.

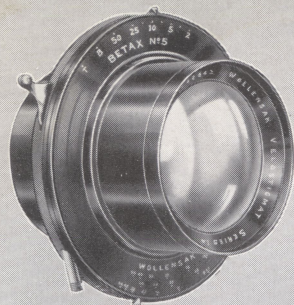
As the quality in a lens contributes greatly to the distinctiveness of the finished photograph, intelligent care should be used in selecting a lens that is best suited for the purpose. As specialists in photographic lenses and shutters, we solicit the opportunity of making recommendations and serving your requirements.

CATALOG No. 39



WOLLENSAK OPTICAL CO.  
ROCHESTER, N. Y., U. S. A.





## VELOSTIGMAT

Reg. U. S. A. Pat. Off.

SERIES Ia *f*6.3-*f*7.7

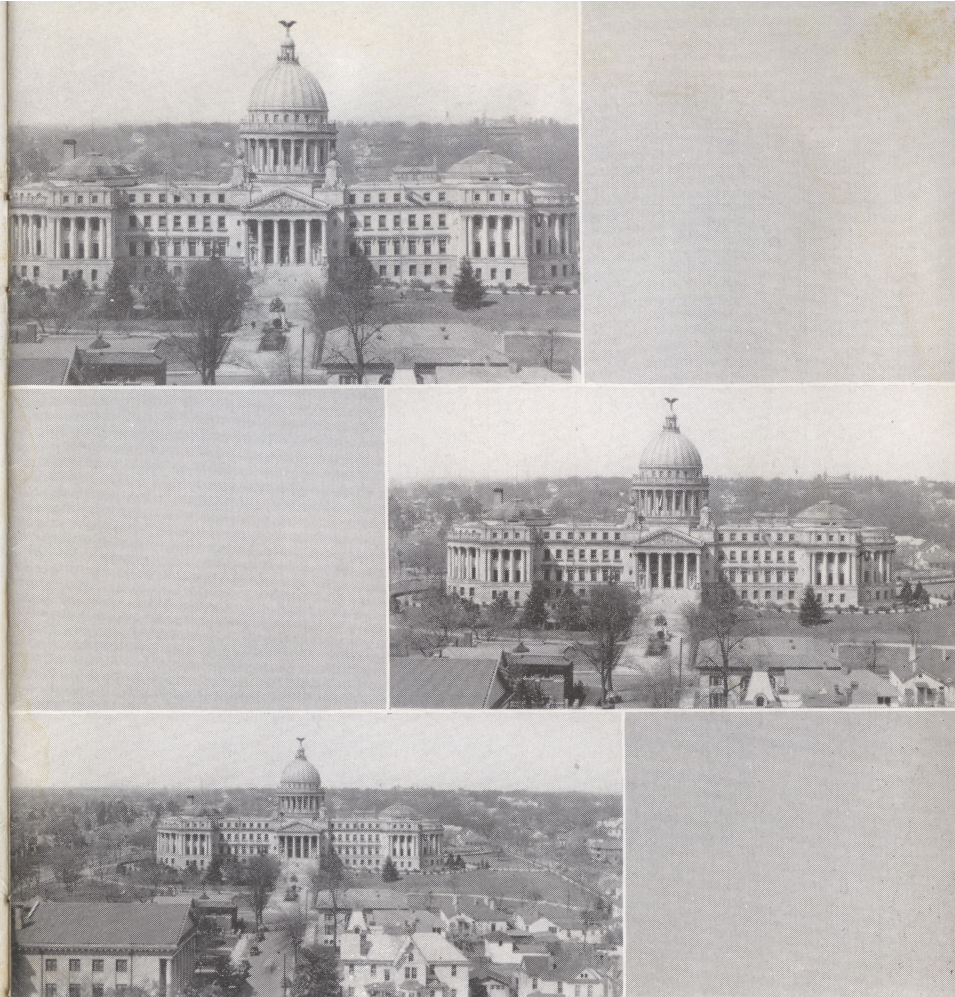
### TRIPLE CONVERTIBLE ... TRIPLE ANASTIGMAT

The distinct advantage of the Series Ia Velostigmat is its triple convertibility. Both the front and rear elements are of longer focus than the doublet and are fully corrected so the user has virtually three fine anastigmat lenses in one.

Long focus lenses are essential for good commercial photography where true perspective, good drawing, larger images or telephoto effects are desired. By using the single elements of the Series Ia Velostigmat these results can be obtained. In using the single elements it is necessary only to stop the diaphragm down slightly to secure accurate definition.

The Series Ia Velostigmat produces fine definition, absolute rectilinearity, flatness of field and is especially well corrected for chromatic aberration,—the essentials that make up a really finely corrected anastigmat lens.

The doublet has a moderate focal length and operates at high speed. These qualities added to its anastigmatic corrections make it ideal for general all-round work, including groups, landscapes, general views, copying, enlarging, and all commercial and architectural photography. In short, as a speedy anastigmat the doublet is essential for all-round use. Its fine chromatic corrections make it suitable for color separation work.



Photos from same point with a 5a Series Ia Velostigmat; the lower was made with the 13" focus doublet; the center, with 20" rear element only and upper one with 25½" front lens.

The commercial photographer or the advanced amateur who wants to combine convenience, versatility and moderate price, will find the Series Ia Velostigmat an excellent investment.



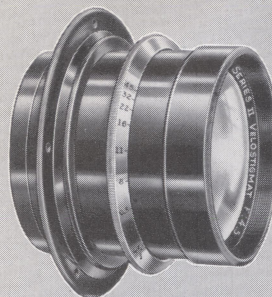
## SERIES Ia VELOSTIGMAT *f*6.3-*f*7.7

No.	Size	Equiv. Focus Inch	Front Focus Inch	Rear Focus Inch	Speed <i>f</i> .	In Barrel	In Betax
1	3 $\frac{1}{4}$ x4 $\frac{1}{4}$	4 $\frac{3}{4}$	8 $\frac{1}{4}$	8 $\frac{1}{4}$	6.3	\$48.00	\$51.50
1a	3 $\frac{1}{4}$ x4 $\frac{1}{4}$	5 $\frac{1}{8}$	10	8 $\frac{1}{4}$	6.8	52.50	56.00
2	4 x5	5 $\frac{3}{4}$	10	10	6.3	55.00	60.00
2a	4 x5	5 $\frac{3}{4}$	12 $\frac{3}{4}$	8 $\frac{1}{4}$	7.7	58.00	63.00
2b	4 x5	6 $\frac{1}{2}$	12 $\frac{3}{4}$	10	6.8	60.50	65.50
3	5 x7	7	15 $\frac{1}{2}$	10	7.7	70.00	78.00
3a	5 x7	7 $\frac{1}{4}$	12 $\frac{3}{4}$	12 $\frac{3}{4}$	6.3	72.50	80.50
3b	5 x8	8 $\frac{1}{4}$	15 $\frac{1}{2}$	12 $\frac{3}{4}$	6.8	79.00	85.00
3c	5 x8	8 $\frac{3}{4}$	20	12 $\frac{3}{4}$	7.7	85.50	91.50
4	6 $\frac{1}{2}$ x8 $\frac{1}{2}$	9	15 $\frac{1}{2}$	15 $\frac{1}{2}$	6.3	87.50	93.50
4a	6 $\frac{1}{2}$ x8 $\frac{1}{2}$	10	20	15 $\frac{1}{2}$	6.8	104.50	110.50
4b	6 $\frac{1}{2}$ x8 $\frac{1}{2}$	11	25 $\frac{1}{2}$	15 $\frac{1}{2}$	7.7	115.50	123.00
5	8 x10	11 $\frac{1}{2}$	20	20	6.3	121.00	128.50
5a	8 x10	13	25 $\frac{1}{2}$	20	6.8	132.00	139.50
6	10 x12	14	31	20	7.7	159.50	167.00
6a	10 x12	14 $\frac{3}{4}$	25 $\frac{1}{2}$	25 $\frac{1}{2}$	6.3	176.00	186.50
7	11 x14	16 $\frac{1}{4}$	31	25 $\frac{1}{2}$	6.8	187.00	197.50
7a	11 x14	17 $\frac{1}{2}$	31	31	6.8	203.50	214.00

## THE SERIES Ia VELOSTIGMAT FOR BANQUET CAMERAS

Besides being a perfect anastigmat with a flat field the Series Ia Velostigmat has an exceptionally large circle of illumination and will cover plates larger than those for which it is listed. This makes it particularly well suited for use with banquet cameras. The following table lists the sizes that are recommended for these cameras.

No.	Size	Equiv. Focus	<i>f</i> . Speed	Plates covered with smaller stop
3b	5 x 8	8 $\frac{1}{4}$ "	6.8	7x11
3c	5 x 8	8 $\frac{3}{4}$ "	7.7	7x11
4	6 $\frac{1}{2}$ x 8 $\frac{1}{2}$	9"	6.3	5x12
4a	6 $\frac{1}{2}$ x 8 $\frac{1}{2}$	10"	6.8	5x12
4b	6 $\frac{1}{2}$ x 8 $\frac{1}{2}$	11"	7.7	5x12
5a	8 x10	13"	6.8	7x17
6	10 x12	14"	7.7	8x20
6a	10 x12	14 $\frac{3}{4}$ "	6.3	8x20
7	11 x14	16 $\frac{1}{4}$ "	6.8	12x20



## VELOSTIGMAT

Reg. U. S. A. Pat. Off.

SERIES II *f*4.5

## AN ALL-ROUND HIGH SPEED ANASTIGMAT

Combining extreme speed and flatness of field with fine anastigmat corrections, the Series II Velostigmat *f*4.5 is one of the most versatile lenses for general studio and portrait work.

In the studio it handles with exacting detail, groups, standing figures, busts, child photography, as well as enlarging and copying. The Series II Velostigmat is available in a wide assortment of longer focal lengths and when intended chiefly for portrait work, it is advisable to select a lens a size larger than the plate for which it is listed because a long focus lens produces more pleasing perspective and better drawing.

Home portrait photographers prefer the Series II Velostigmat, not only because its compact construction makes handling easy, but because of its moderate focal length that permits working within the confines of the average home, and its speed that overcomes the ever present difficulty of unfavorable lighting.

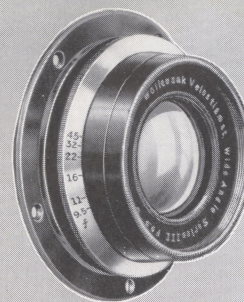
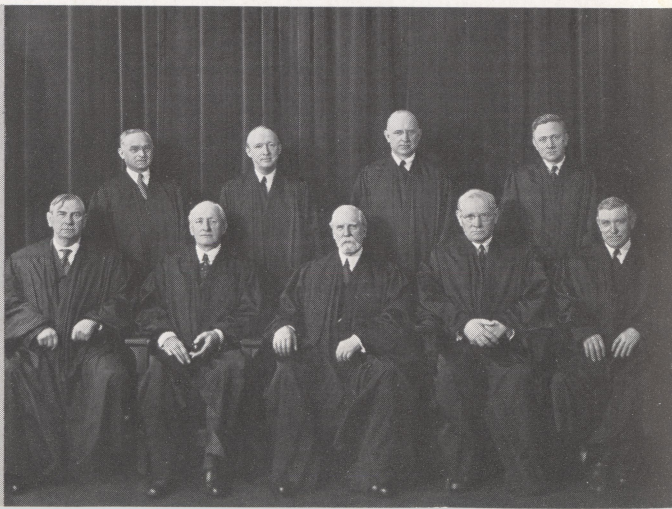


For enlarging work the Series II Velostigmat, because of its flat field, is the choice of the experienced photographer. It will enlarge with fidelity, the finest detail in the negative and with surprisingly quick exposures.

When fitted to the reflecting types of camera, the Series II Velostigmat is an admirable choice. It gives fully-timed negatives with sharp, sparkling definition even under adverse lighting conditions.

No.	Size	Equiv. Focus	In Barrel	In Betax	In Studio
0	2 $\frac{1}{4}$ x 3 $\frac{1}{4}$	3 $\frac{1}{2}$ in.	\$27.50	\$32.50	
1	3 $\frac{1}{4}$ x 4 $\frac{1}{4}$	5 in.	32.50	37.50	
2	4 x 5	6 $\frac{1}{2}$ in.	45.00	51.00	
3	5 x 7	7 $\frac{1}{2}$ in.	53.00	63.50	
3a	5 x 8	8 $\frac{1}{4}$ in.	75.50	86.00	
4	6 $\frac{1}{2}$ x 8 $\frac{1}{2}$	9 $\frac{1}{2}$ in.	108.00	115.50	
5	8 x 10	12 in.	143.50	154.00	\$149.00
6	10 x 12	14 in.	189.00		195.00
7	11 x 14	16 in.	245.00		247.50

This picture made by Harris & Ewing illustrates the possibilities of the Series II Velostigmat f4.5 as a group lens.



## VELOSTIGMAT

Reg. U. S. A. Pat. Off.

SERIES III f9.5

### EXCEPTIONALLY FAST WIDE ANGLE ANASTIGMAT

A wide angle lens is an absolute necessity to the studio or photographic organization endeavoring to maintain a complete photographic service. With a lens of this type it is possible to obtain photos of buildings in narrow streets, interiors, banquet groups, and all work in confined space with virtually no distortion.

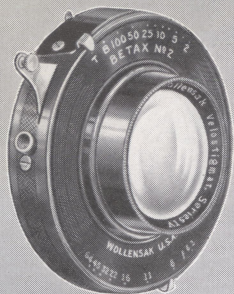
Being a corrected anastigmat it gives excellent definition over the entire plate for which it is listed, covering an angle of 90 degrees. Stopping down is only necessary to increase depth of focus.

The exceptional speed of the Series III Velostigmat is a mighty fine asset for focusing in dimly lighted interiors, for making snapshots out of doors and for flash light work.

Finely corrected and attractively finished, the Series III Velostigmat Wide Angle constitutes a fine investment for the progressive studio or commercial photographer.

No.	Plate Covered at f9.5	Equivalent Focus	In Barrel	In Betax Shutter
3	5 x 7	4 $\frac{5}{16}$ in.	\$43.50	\$47.50
4	6 $\frac{1}{2}$ x 8 $\frac{1}{2}$	5 $\frac{3}{8}$ in.	50.00	54.00
5	8 x 10	6 $\frac{1}{4}$ in.	65.00	71.00
7	11 x 14	9 in.	100.00	106.00





## VELOSTIGMAT

Reg. U. S. A. Pat. Off.

SERIES IV *f*6.3

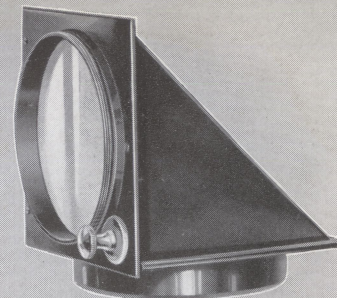
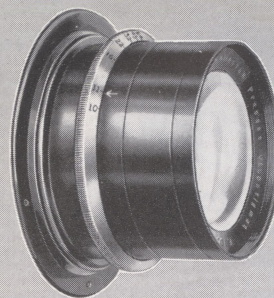
### FINELY CORRECTED ... MODERATELY PRICED

That we are able to offer as fine a lens as the Series IV Velostigmat so reasonably is indeed a tribute to modern manufacturing methods.

The Series IV Velostigmat is a perfectly corrected anastigmat working at the speed of *f*6.3, and will sharply cover the plate for which it is listed at full aperture. Its moderate price will appeal to the photographer who has been handicapped by the lack of speed and marginal definition of the rapid rectilinear type of lens.

It is suitable for commercial, architectural, landscape and view work and home portraiture where the lighting is good. For copying and enlarging the Series IV Velostigmat is a steady producer of results.

No.	Size	Equiv. Focus	In Barrel	In Betax
0	2 $\frac{1}{4}$ x 3 $\frac{1}{4}$ 1 $\frac{5}{8}$ x 2 $\frac{1}{2}$	3 $\frac{1}{2}$ in.	\$18.50	\$21.00
1	3 $\frac{1}{4}$ x 4 $\frac{1}{4}$ 2 $\frac{1}{2}$ x 4 $\frac{1}{4}$	5 in.	23.00	26.50
2	4 x 5	6 $\frac{1}{2}$ in.	28.50	33.50
3	5 x 7	7 $\frac{1}{4}$ in.	37.50	42.50
4	6 $\frac{1}{2}$ x 8 $\frac{1}{2}$	9 $\frac{1}{2}$ in.	65.00	71.00
5	8 x 10	12 in.	82.50	93.00



## VELOSTIGMAT

Reg. U. S. A.  
Pat. Off.

### PROCESS AND PRISMS

The exceptional chromatic qualities of the Velostigmat Process make it ideal for four-color process work when used at smaller apertures. Its fine anastigmatic corrections adapt it to precision line and half-tone work.

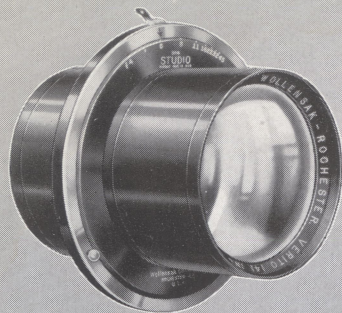
Designed for the photo engraver, this lens should also interest commercial photographers because its flat field, even illumination, chromatic corrections and perfect covering power answer the need for ideal copying, enlarging, reducing, etc.

The front lens cell is threaded to receive the Wollensak prisms. These prisms are made of the finest optical glass procurable, and are accurately ground and polished.

No.	Equivalent Focus	Speed	Plates Covered for Reduction	Plates Cov'd for full Size Copy	Price	Size of Prism to fit	Price of Prism*
4	10 $\frac{1}{4}$ in.	<i>f</i> 10	6 $\frac{1}{2}$ x8 $\frac{1}{2}$	10x12	\$84.50	2 in.	\$82.50
5	14 in.	<i>f</i> 10	8x10	11x14	112.50	2 $\frac{1}{2}$ in.	90.00
6	16 in.	<i>f</i> 10	10x12	12x15	135.00	3 in.	132.50
7	19 in.	<i>f</i> 10	12x15	14x17	157.50	3 $\frac{1}{2}$ in.	160.00
9	25 in.	<i>f</i> 10	16x20	20x24	225.00		
10	30 in.	<i>f</i> 16	20x24	24x30	326.50		

\*Extra charge for fitting Prisms to Lenses of other makes.





## VERITO

### DIFFUSED FOCUS f4

#### A PRACTICAL AND POPULAR SOFT FOCUS LENS

The pioneer of soft focus lenses. The Verito with its speed, convertible feature and soft focus quality makes it an indispensable tool to the artist-photographer and pictorialist.

Any degree of softness or sharpness may be obtained by simply changing the size of the diaphragm aperture. Definition is not destroyed, but pleasingly subdued so that retouching is practically eliminated. The rear element may be used alone. This gives a slightly different quality of diffusion and being longer in focus than the doublet makes it ideal for portraiture. The Verito improves on acquaintance. The longer you use it the more delighted you will be with its infinite possibilities.

When projecting thru the Verito, the harshest and most wiry negatives are made to breathe a softness of exceptional beauty.

No.	Size	Equiv. Focus	Rear Focus	In Barrel	In Betax	In Studio
*A	3 1/4 x 4 1/4	5 in.	10 in.	\$25.00	\$28.50	
*B	4 x 5	6 1/2 in.	14 in.	27.50	32.50	
1	3 1/4 x 4 1/4	6 1/8 in.	10 in.	31.50	37.50	
2	4 x 5	7 1/4 in.	11 in.	36.00	46.50	
3	5 x 7	8 3/4 in.	14 in.	47.00	59.50	
4	6 1/2 x 8 1/2	11 1/2 in.	20 in.	66.00		\$72.00
5	8 x 10	14 1/2 in.	24 in.	93.50		96.00
7	11 x 14	18 in.	30 in.	121.00		121.00

\*Size A and B f6—all others f4.

In enlarging as in making negatives, the softness is controlled by the diaphragm.

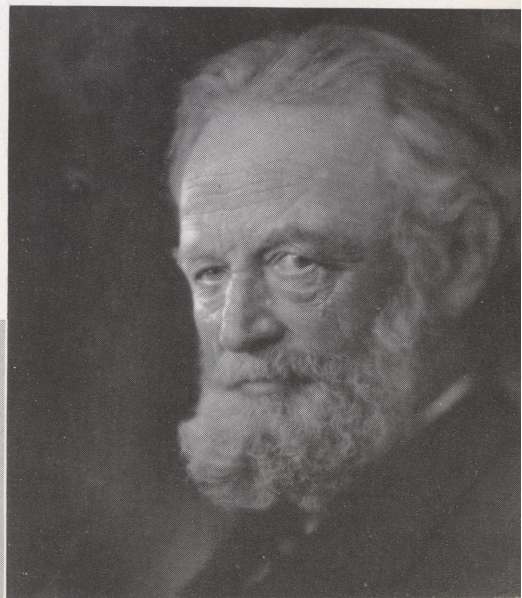
#### VERITO EXTENSION LENS

This is a complete front combination for the 18" focus Verito. It interchanges with the regular front lens and increases the focus to 22 1/4" thus offering a long focus portrait lens at moderate cost. Price complete with mount \$25.00.

#### VERITO FOR AUTO FOCUS ENLARGERS

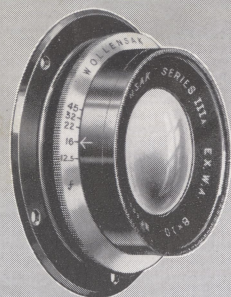
Enlargers with the auto focus features can be equipped with the Verito and still retain the automatic arrangements. To do this it is necessary to send the anastigmat lens from the enlarger to the factory so the focus of it may be exactly duplicated in the Verito.

"Special 10" focus f4.5 Verito for 8 x 10 Eastman  
Projection Printer. . . . . \$57.50  
Special 7 1/2" focus f4.5 Verito for 5 x 7 Eastman Auto-  
focus Enlarger. . . . . 47.50



The 1936 prize winning Portrait made by John Erickson with the Verito f4.





## EXTREME WIDE ANGLE

SERIES IIIa *f*12.5

### AN IDEAL INEXPENSIVE WIDE ANGLE LENS

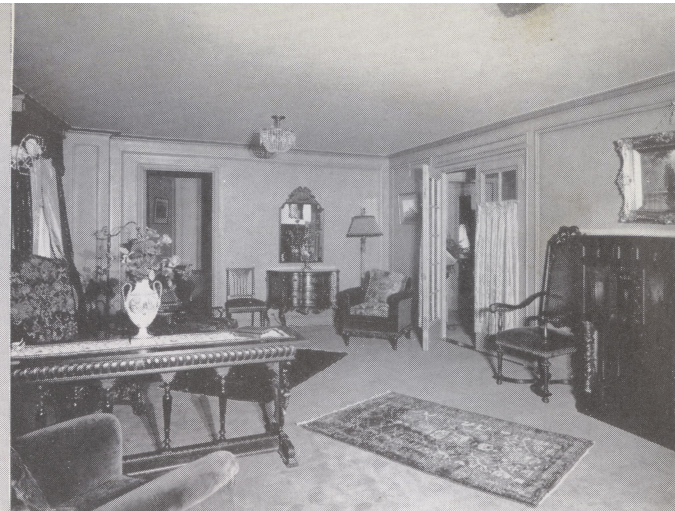
The genuine merits and unlimited possibilities of the Series IIIa lens have gained for it a host of enthusiastic friends.

Its speed, extreme angle, reserve covering power and moderate price, offer a combination of qualities that should prove of real interest to the commercial photographer. For banquet camera work where space is limited and a short focus lens required, the Series IIIa will make a strong appeal.

The Series IIIa has an angle of view of 90 degrees and gives good definition at full aperture; wiry sharpness when stopped down. Because of its large circle of illumination this lens can be used on a plate a size larger than listed by stopping down the diaphragm. It then affords an angle of about 100 degrees.

No.	Size	Larger Plates Smaller Stops	Equiv- alent Focus	In Barrel	In Betax Shutter
3	5 x 7	6½x 8½	4⅝ in.	\$28.50	\$33.50
4	6½x 8½	8 x 10	5⅜ in.	37.50	43.50
5	8 x 10	10 x 12	6¼ in.	40.00	46.00
6	10 x 12	11 x 14	7⅞ in.	50.00	57.50
7	11 x 14	14 x 17	9 in.	65.00	72.50
8	14 x 17	17 x 20	11 in.	80.00	90.50
9	17 x 20	20 x 24	13 in.	100.00	110.50

Made with the Series IIIa Extreme Wide Angle by Harris & Ewing.



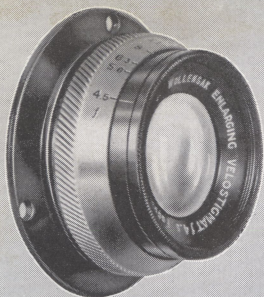
## VOLTAS *f*8

### AN INEXPENSIVE, GENERAL PURPOSE LENS

Where high speed and fine corrections are not essential, the inexpensive Voltas will adequately serve the purpose. It is an all-round lens, particularly adapted to landscape, view and commercial work. While fair detail is rendered at full opening, the Voltas must be stopped down in order to insure sharp definition to the extreme corners of the plate. The Voltas is convertible, the single elements may be used alone with smaller stops.

No.	Size	Equivalent Focus	In Barrel	In Betax Shutter
1	3¼x 4¼	5 in.	\$18.50	\$22.50
2	4 x 5	6½ in.	20.00	25.00
3	5 x 7	8 in.	23.00	28.00
4	6½x 8½	10½ in.	32.50	38.50
5	8 x 10	12½ in.	42.50	53.00
6	10 x 12	16 in.	70.00	77.50





## ENLARGING VELOSTIGMAT

Reg. U. S. A. Pat. Off.

### ENLARGEMENTS FROM MINIATURE NEGATIVES

Enlargements from miniature negatives to popular size prints with sparkling detail, are now a simple matter with the Velostigmat, Genuine anastigmats with uniformly flat field, corrected for spherical and chromatic aberration, coma, distortion and flare. The Wollensak Enlarging Velostigmat is available in the following foci and speeds.

2" focus f4.5	\$15.00	3" focus f3.5	\$25.00
3" focus f4.5	18.50	3½" focus f3.5	30.00
3½" focus f4.5	20.00		
4¼" focus f4.5	23.50	2" focus f6.3	13.00
5" focus f4.5	27.00	2½" focus f6.3	14.00
6½" focus f4.5	40.00	3½" focus f6.3	14.50
7½" focus f4.5	55.00	4½" focus f6.3	20.00
		6½" focus f6.3	25.00
2" focus f3.5	20.00	7½" focus f6.3	35.00

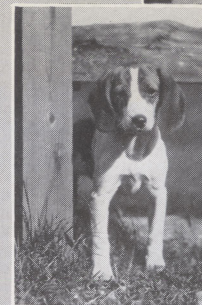
Mounted in iris diaphragm barrel with flanges and lens caps.

**SPECIAL ADAPTER** for fitting above lenses to Leica Enlargers 2.00

### THE VELOSTIGMAT for Direct Positive Photos

Direct positive paper being a slow material, a reasonably quick exposure must be made. The f3.5 Velostigmat with its high speed and excellent covering power is the choice of makers and users of positype machines today. The 3" or 3½" foci as listed above are recommended for the 1½" x 2" photos.

Retain the sharp detail  
of your miniature neg-  
ative even when greatly  
enlarged.



## COLOR FILTERS

### 2-X AND 4-X YELLOW, GREEN, RED AND HAZE

Filters are used to reproduce the true tonal relation of colors and for the elimination of haze or some unwanted color contrast. They also reduce intensity of illumination when using fast material or when diaphragm cannot be stopped down sufficiently to prevent over-exposure. Wollensak Filters are made of colored glass—non-gelatin—and optically polished to prevent impairing quality of camera lens. Colors guaranteed not to fade or deteriorate even under extreme climatic conditions. Wollensak Filters are supplied in beautifully finished metal mountings with thumb screws or spring tensions for fastening securely to camera lens.

Size	Will Fit Lens Mounts From	Price
A M 4	¾" to 1 29/32"	\$1.75
A M 5	7/8" to 1 5/8"	2.00
A M 6	1" to 1 7/8"	2.25
No. 1	1 5/32" to 1 3/2"	3.50
No. 2	1 7/16" to 1 17/32"	4.00
No. 3	1 9/16" to 1 31/32"	4.50
No. 4	1 11/16" to 2"	5.25

Prices of larger sizes upon request.





## BETAX GAMMAX DELTA

### DEPENDABLY ACCURATE SHUTTERS

Designed for those who require extreme accuracy in exposures and simple sturdy construction to withstand hard usage.

An outstanding feature in these shutters is our gearless, pumpless retarding mechanism which is simple in construction and positive in action assuring accurate and unvarying speeds.

Metal diaphragm leaves and shutter blades are incorporated in these models to withstand the heat of enlarging lamps.

All these shutters are automatic and are operated either with the wire release, or bulb and hose, (with the aid of a bulb attachment). Finished in black lacquer with white engraving.

No.	Light Opening inches	Lens Opening inches	Flange Diameter		Betax	Gammax	Deltax
			Outside inches	Inside inches			
†0	$\frac{9}{16}$	$\frac{27}{32}$	$1\frac{15}{32}$	$\frac{15}{16}$	\$12.50	\$ 7.50	\$ 6.00
*1	$\frac{3}{4}$	$1\frac{1}{16}$	$1\frac{21}{32}$	$1\frac{3}{16}$	13.50	8.50	7.50
*2	1	$1\frac{7}{32}$	$1\frac{27}{32}$	$1\frac{5}{16}$	15.00	10.00	
†3	$1\frac{3}{8}$	$1\frac{25}{32}$	$2\frac{21}{32}$	2	18.00		
†4	$1\frac{3}{4}$	$2\frac{3}{8}$	$2\frac{17}{32}$	$2\frac{19}{32}$	22.50		
†5	$2\frac{1}{4}$	$2\frac{29}{32}$	$4\frac{3}{32}$	$3\frac{3}{32}$	27.50		

Prices include flange and wire release.

- †Betax No. 0 Time Bulb, 1-100, 1-50, 1-25, 1-10, 1-5  
 \*Betax Nos. 1 & 2 Time Bulb, 1-100, 1-50, 1-25, 1-10, 1-5, 1-2  
 †Betax Nos. 3, 4 & 5 Time Bulb, 1-50, 1-25, 1-10, 1-5, 1-2  
 Gammax Time Bulb, 1-100, 1-50, 1-25, 1-10  
 Deltax Time Bulb, 1-100, 1-50, 1-25

### STUDIO SHUTTER

A practically noiseless between-the-lens shutter. Bulb exposure only, wire release standard equipment. Bulb and hose attachment, \$3.00 extra. Exposures longer than one-fifth second may be had by maintaining pressure on the wire release or bulb. No flanges supplied on Studio Shutters.

No.	Light Open'g	Lens Open'g	Price	No.	Light Open'g	Lens Open'g	Price
1	$2\frac{1}{16}$ in.	$2\frac{13}{32}$ in.	\$20.00	4	$3\frac{1}{2}$ in.	$3\frac{29}{32}$ in.	\$27.50
2	$2\frac{7}{16}$ in.	$2\frac{15}{16}$ in.	22.50	*5	$4\frac{1}{8}$ in.	$4\frac{1}{2}$ in.	30.00
3	$2\frac{15}{16}$ in.	$3\frac{13}{32}$ in.	25.00	*With bulb and tube only			

### LENS BARRELS

Equipped with iris diaphragms made of metal that will withstand the heat of enlarging lamps. Prices include flanges.

No.	Light Aperture	Price	No.	Light Aperture	Price
1	$\frac{3}{4}$ in.	\$10.00	6	$1\frac{13}{16}$ in.	\$15.00
2	$\frac{7}{8}$ in.	10.00	7	$2\frac{3}{16}$ in.	17.00
3	$1\frac{1}{16}$ in.	10.00	8	$2\frac{11}{16}$ in.	19.00
4	$1\frac{9}{32}$ in.	12.00	9	$3\frac{5}{32}$ in.	25.00
5	$1\frac{17}{32}$ in.	12.00	10	$3\frac{29}{32}$ in.	30.00

### STANDARD FLANGES

### LENS CAPS

Thread Diam.	Price	Thread Diam.	Price	Inside Diam.	Price
$\frac{61}{64}$ ".....	\$ .55	$2\frac{19}{32}$ ".....	\$1.50	1" and under.....	\$ .75
$1\frac{3}{16}$ ".....	.65	$2\frac{29}{32}$ ".....	1.65	2" " ".....	1.00
$1\frac{5}{16}$ ".....	.70	$3\frac{3}{32}$ ".....	1.75	3" " ".....	1.25
$1\frac{9}{16}$ ".....	.90	$3\frac{5}{8}$ ".....	1.95	4" " ".....	1.50
2" ".....	1.10	$4\frac{3}{32}$ ".....	2.20	5" " ".....	1.75
$2\frac{3}{16}$ ".....	1.40	$4\frac{11}{16}$ ".....	2.75	Over 5".....	2.00
		$5\frac{5}{16}$ ".....	3.85		

### ACCESSORIES

Wire releases, 12", 85c; 20", \$1.75; 36", \$3.75.

- Bulb attachments (State size and type shutter)..... \$3.50  
 Studio bulb with 4 ft. tubing..... 1.50  
 Special diaphragm scales, per set..... 1.50  
 Standard diaphragm scales, per set..... 1.00





## CINE VELOSTIGMAT

Reg. U. S. A. Pat. Off.

**Speed, Wide Angle &  
Telephoto Lenses  
for Amateur Movies**

### FOR 8mm. AND 16mm. CAMERAS

The Cine Velostigmat lenses are carefully corrected to produce pictures that are sharp to the edge of the frame, with uniformly excellent detail, contrast and sparkle.

#### CINE VELOSTIGMAT f1.5-f1.9

Ultra-rapid, to yield properly timed negatives for movies made at dusk, interiors or woodland scenes. This reserve speed is essential, too, for slow motion, color films and to cope with adverse lighting conditions.

1/2" Focus f1.9 Cine Velostigmat in micrometer focusing mount, for 8 mm.	\$46.50
Filter for above, any density or color.....	2.50
1" Focus f1.5 Cine Velostigmat in micrometer focusing mount, for 16 mm.	50.00
Filter for above, any density or color.....	3.50
2" Focus f1.5 Cine Velostigmat in micrometer focusing mount, for 16 mm.	87.50
Filter for above, any density or color.....	5.00

#### CINE VELOSTIGMAT f2.7

When price and extra speed are factors the f2.7 will produce well-timed black and white and color films under poor lighting conditions.

The 15 mm. focus f2.7 Velostigmat when used on 16 mm. film gives an angle of view approximately 69% wider than a 1" lens—a great advantage when working in confined spaces, either indoors or out.

1/2" Focus f2.7 Cine Velostigmat in barrel with iris diaphragm, for 8 mm.	\$22.50
Filter for above, any density or color.....	2.50
15 mm. Focus f2.7 Cine Velostigmat in barrel with iris diaphragm, for 16 mm.	27.50
Filter for above, any density or color.....	3.50
1" Focus f2.7 Cine Velostigmat in barrel with iris diaphragm, for 16 mm.	22.50
Filter for above, any density or color.....	2.50

## CINE VELOSTIGMAT f3.5

As an all-purpose lens, for use in average lighting, this lens finds many friends. It produces films that glow with snap and brilliancy, even when projected to many times their own area upon the screen.

1/2" Focus f3.5 Cine Velostigmat in barrel with iris diaphragm, for 8 mm.	\$17.50
Filter for above, any density or color.....	2.50
1" Focus f3.5 Cine Velostigmat in barrel with iris diaphragm, for 16 mm.	17.50
Filter for above, any density or color.....	2.50

## CINE TELEPHOTO

A Telephoto is to your movie camera what a telescope is to your eyes. Used on a 16 mm. camera, a Wollensak Telephoto magnifies the equivalent of its focal length (3" focus magnifies 3 times, 6" focus magnifies 6 times, etc.). On 8 mm. lenses, the 1 1/2" focus magnifies 3 times. These make possible fascinating photographs of shy and distant wild animals and birds. At the races, games and sporting events, you photograph selected contestants to appear in a large size when projected upon the screen.

1 1/2" Focus f3.5 Cine Telephoto in micrometer focusing mount, for 8 mm.	\$37.50
Filter for above, any density or color.....	3.50
2" Focus f3.5 Cine Telephoto in micrometer focusing mount, for 16 mm.	35.00
Filter for above, any density or color.....	3.50
3" Focus f4 Cine Telephoto in micrometer focusing mount, for 16 mm.	50.00
Filter for above, any density or color.....	3.50
4" Focus f4.5 Cine Telephoto in micrometer focusing mount, for 16 mm.	57.50
Filter for above, any density or color.....	3.50
6" Focus f4.5 Cine Telephoto in micrometer focusing mount for 16 mm.	75.00
Filter for above, any density or color.....	5.00
Adapter to fit 16 mm. lenses to 8 mm. cameras .....	2.50

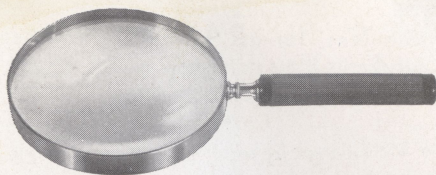
## COLOR FILTERS

Wollensak Color Filters are made of the finest natural colored glass procurable. The color is fast and will not fade or deteriorate under heat, dampness, or other extreme climatic conditions.

A color filter snaps up the contrast and reproduces colors in their true tonal relation to each other, giving beautiful results.

These filters are available in 2X and 4X yellow, red, green, haze and neutral density and in screw type mountings to fit practically all lenses.





### RETOUCHING GLASSES

Made of fine clear glass, optically ground and polished, assuring fine vision without objectionable color-fringes, exceptionally high magnifications. Fitted into highly polished Rhodium plated frame with attractive vulcanized fiber handle.

2 1/2" diameter.....\$2.00	3 1/2" diameter.....\$2.50
3" diameter..... 2.25	4" diameter..... 3.00
5" diameter.....\$4.50	

### REDUCING GLASSES

A biconcave lens used to show how photographs will reduce for reproduction. Supplied in the same style frame and handle as the retouching glasses.

3" diameter.....\$3.00

### TRIPOD MAGNIFIER

A handy magnifier for the studio, home and field use. Excellent glass for focusing and examining prints and negatives. Fine lenses give excellent illumination and clear definition. Mounted in stand with screw focusing mount. Magnification 7 1/2X.



Price.....\$ .75

### GUARANTEE

Wollensak lenses are guaranteed to be optically and technically correct. All shutters are warranted to give perfect satisfaction. If any of our products, with proper care, fail to give satisfaction within a year after leaving our factory, we will repair or replace free.

### TRIAL PRIVILEGE

Our liberal trial privilege permits a thorough test before buying. Should a customer be undecided between two types or sizes of lenses, we are willing to send both for comparative test without obligation, through a photographic dealer. The customer, however, is expected to pay the transportation charges when a lens is sent on memorandum.

### TERMS

Wollensak lenses are sold only through established photographic stock houses or dealers. If the customer has no local dealer, we will gladly put him in touch with someone conveniently located who can take care of his requirements. All prices are f. o. b. Factory.

### ADVISORY SERVICE

Our Service Department is ready and willing to give individual attention to all optical and shutter problems. This service involves no obligation.



