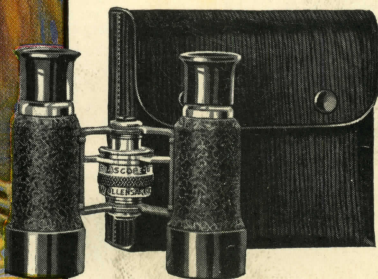
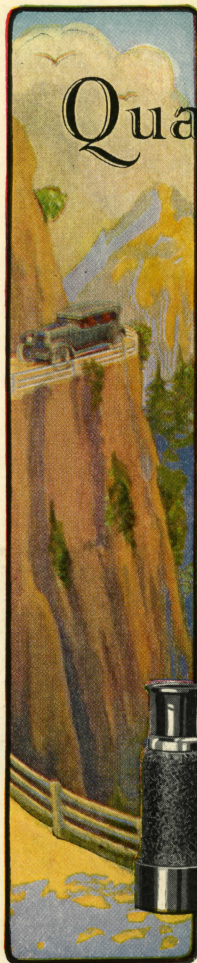
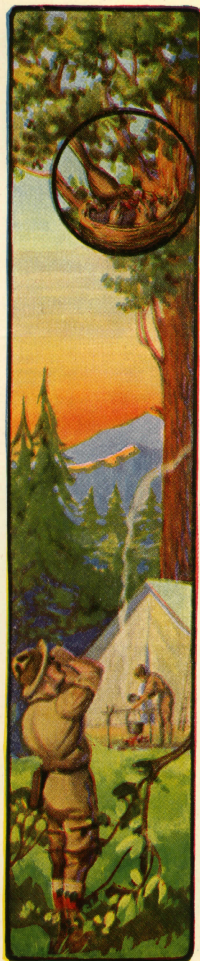


Wollensak Quality Scopes

3 to 6 power
\$1.00 to \$7.00

33⅓% Discount





If you love the great outdoors—
if you like to motor, hunt, fish, camp, travel or
hike, if bird and nature study appeal to you, if you
enjoy watching football, baseball or other athletic
events *buy a Biascope!*

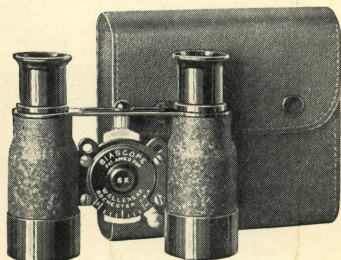
Biascope enhances the pleasure of all outdoor
activities. With its six-power magnification, this
light-weight pocket-size binocular eliminates dis-
tance and enables you to see better and farther with
less effort. It's the glass you've always wanted, at
a price which you'll approve.

Wollensak Optical Company, Rochester, N. Y.

Specifications

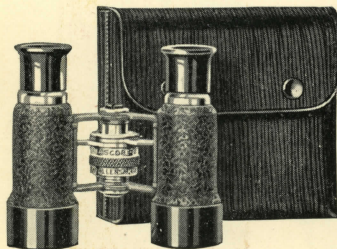
BIASCOPE "A" \$5.00

Linear magnification, 6 times; ob-
jective lens, 25 mm. diameter; avail-
able in two pupillary distances, 63 mm.
for most requirements and 58 mm. for
boy scouts and individuals with eyes
closer together; size, $3\frac{1}{4}'' \times 3\frac{1}{4}''$; weight,
 $7\frac{1}{2}$ oz.; lever adjustment; handsome
durable finish of black crystallized lac-
quer; genuine leather case; price, com-
plete \$5.00.



BIASCOPE "B" \$7.00

Power and finish same as Biascope
"A" with same achromatic optical sys-
tem of fine definition and excellent
illumination; size and weight approx-
imately the same; also available in wide
field model. $3\frac{1}{2}$ power, ideal for theatre
use; screw focusing system and conven-
ient pupillary adjustment makes one
instrument fit all eyes; genuine leather
case; price, complete \$7.00.



POCKESCOPE

THE POCKET TELESCOPE

FOR general use, the Biascope is by all means the more desirable instrument. With its double optical system it affords comfortable vision and no eyestrain. However, where extreme compactness and light weight are desired, or when price is a consideration, the inexpensive Pockescopes offer an admirable second choice. These pocket telescopes are of the monocular type, finished like the Biascope and supplied with neat leather cases.

Specifications and Prices

Model	Power	Length (closed)	Max. Diam.	Price
Pock. Jr.	3	2 $\frac{5}{8}$ "	$\frac{11}{16}$ "	\$1.00
Pockescope 4 $\frac{1}{2}$		3"	$\frac{11}{16}$ "	1.50
Pock. Sr.	6	3 $\frac{1}{4}$ "	1 $\frac{3}{16}$ "	2.00

