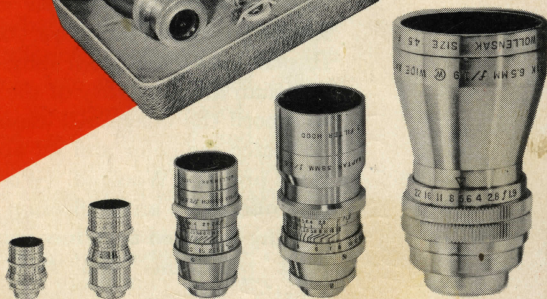


WOLLENSAK



8mm

CINE
RAPTAR
LENSES

and CINESET
ASSORTMENTS

What **WOLLENSAK** Quality means to you...

All Wollensak Cine Raptar lenses have the highest covering power, deliver sharp images to the very edge of the film over the entire focusing range. Tests show that all Raptar lenses are much more critical than the capability of the films to record the image. All lenses are corrected for color and all aberrations and are Wocoted. (*Wocoting* is Wollensak's anti-reflection hard coating designed to reduce internal light reflections and flare and greatly increase brilliance and detail.) Thus you are able to shoot either color or black and white with finest results.

Most of the lenses in focusing mounts have depth of field scales, which tell instantly areas in focus. Positive click stops give quick, precise diaphragming.

An example of Wollensak care in manufacturing is the steps taken to give the lens barrel the finest "lifetime" finish. It takes four operations before the brass barrels are ready for chrome plating. First, the barrels are satin finished. Then they are copper plated, nickel plated, satin finished and finally chrome plated. Only by following these steps will a lens always look its best.

Finally, *your* assurance of consistency in uniformity of every Wollensak lens is the many critical tests and careful inspections they must undergo. Each lens must meet the highest standards of lens performance before it is engraved Raptar . . . before it leaves the plant. What's in a name? The reputation, honor and integrity of the manufacturer.

Why do I need an **Accessory Lens?**

In movie making, picture interest and continuity can be greatly increased by changing the viewpoint or by changing the image size of the subject being photographed. Since the normal focus lens delivers an image of comparable perspective to that seen by the human eye, you have to move nearer or farther away from the subject to enlarge the subject or widen the field. Obviously the job is most easily and effectively accomplished by interchanging accessory lenses, especially where physical limitations prevent moving closer or farther away from the subject. All scenes can then be shot from the same camera distance. The change of image size is referred to as "long shot," "medium shot" or "close-up."

A long shot is used to establish the setting of the picture. The medium shot directs attention to the subject . . . tells us what is happening. The close-up identifies the character . . . heightens the dramatic effect.

Are accessory lenses **really** expensive?

No! If you own a wide angle and a telephoto lens it's like having three cameras instead of one. Accessory lenses enhance your skill and versatility as a photographer by allowing you to add variety, increase interest and step up the tempo by injecting a change of pace. You can now take pictures that would be impossible with a normal focus lens. Your movies will have the "Hollywood" touch. You'll show them with pride. Only with accessory lenses . . . the wide angle and telephoto can you take interesting, story-telling movies.

Remember, a movie camera and film cost money, so get the most out of your equipment. Don't forget that the lens is the heart of your camera. No matter how expensive the camera body, how skillfully the interior is machined the finest pictures can only be made with the highest quality lens. When you see what fine quality accessory lenses do, you'll agree they aren't expensive.



NORMAL FOCUS

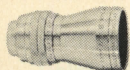
Used for most action shots of your picture.



The normal lens sets the scene.



This is called a medium shot.

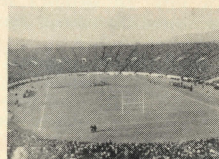


WIDE ANGLE

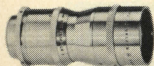
Used when it is necessary to include an area larger than covered by normal lens to tell the story



This takes in the entire setting.

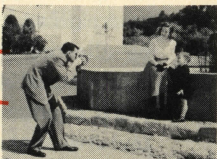


Long shots establish the scene.

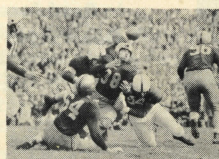


TELEPHOTO

Used to single out a specific object of interest or bring distant objects up close.



Telephotos pick up the details.



Telephotos give us a good look.

Wide Angle Lenses

You need a Wollensak Cine Raptar Wide Angle lens when it is necessary to cover a larger area than is possible with a normal focus lens . . . when it is impossible to get far enough away from your subject to get everything you want. You need a wide angle lens when photographing groups in confined spaces, in small rooms, on ship-board, without panning. Or you'll use a wide angle lens to get extreme depth of field for dramatic effects.

Telephoto Lenses

You will use a Wollensak Cine Raptar Telephoto when you want large images . . . when the subject is too far away and you can't move up close . . . football games, yacht races, sporting events, animal and bird photography. A telephoto lens brings action up close enlarged in sharpest detail like a binocular or telescope.

When making flower studies, portraits or candid shots a telephoto lens gives a naturalness without distortion in perspective.

Cine Raptar Lenses for 8mm Cameras

Haze filter supplied with individual cine lenses at no extra cost.



HIGH-SPEED

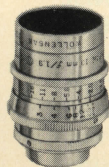
13mm f/1.9 Normal Cine Raptar in fixed focus

General purpose . . . extreme speed normal lens for shooting pictures under adverse light conditions. No focusing required. Especially designed for the beginner. \$28.09 tax included

Focusing Range—At f/1.9 in focus from 10 feet to infinity

Aperture—f/1.9 to f/22

Filter Size—# 4



13mm f/1.9 Normal Cine Raptar in focusing mount

General purpose . . . extreme speed normal lens for shooting pictures under adverse light conditions. Permits close-ups at wide apertures. Can be used by beginners as a fixed focus lens. \$45.05 tax included

Focusing Scale—1 foot to infinity

Aperture—f/1.9 to f/22

Filter Size—# 4



WIDE ANGLE

6.5mm f/1.9 Wide Angle Cine Raptar in fixed focus

Extreme speed, extreme wide angle lens. Covers full 4-times the area of the normal 1/2" lens. Maximum amount of coverage with highest speed. Extremely useful under adverse light conditions and limited shooting areas. Eliminates panning.

\$60.95 tax included

Focusing Range—At f/1.9 in focus 3.6 feet to infinity

Aperture—f/1.9 to f/22

Filter Size—# 4.5



6.5mm f/2.5 Wide Angle Cine Raptar in fixed focus

High-speed extreme wide angle lens. Covers full 4-time area of normal lens. Extremely useful under most lighting conditions and in limited shooting areas. Eliminates panning. Highest quality for the price-minded. \$45.05 tax included

Focusing Range—At f/2.5 in focus 3.1 feet to infinity

Aperture—f/2.5 to f/22

Filter Size—# 4.5



9mm f/2.5 Wide Angle Cine Raptar in fixed focus

High-speed wide angle lens for cameras with 9mm view finder provisions. Covers 2-times the area of a normal lens \$41.87 tax included

Focusing Range—At f/2.5 in focus from 4 1/2 feet to infinity

Aperture—f/2.5 to f/22

Filter Size—# 4.5

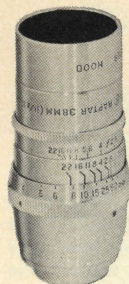
TELEPHOTO



1" f/2.5 Telephoto Cine Raptor in focusing mount

High-speed telephoto with 2-time magnification recommended for hand-held telephoto shots. Ideal for close-ups and table tops. Eliminates distortion in perspective for portraiture. Novice can use as a fixed focus lens by simple settings (Red Engravings).....**\$50.35** tax included

Focusing Scale—2½ feet to infinity
Aperture—f/2.5 to f/16
Filter Size—#4



1½" f/2.8 Telephoto Cine Raptor in focusing mount

High-speed telephoto with 3-time magnification... moderately priced. Excellent for taking either black and white or color under most lighting conditions.

\$46.75 no tax

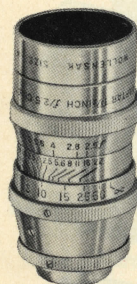
Focusing Scale—1½ feet to infinity
Aperture—f/2.8 to f/22
Filter Size—#4



1½" f/3.5 Telephoto Cine Raptor in fixed focus

Moderate speed telephoto with 3-time magnification. Ideal for beginner. No focusing required. Highest quality for price-minded movie maker.....**\$26.50** no tax

Focusing Range—At f/3.5 in focus from 25 feet to infinity
Aperture—f/3.5 to f/22
Filter Size—#4

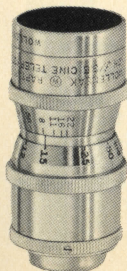


1½" f/2.5 Telephoto Cine Raptor in focusing mount

High-speed telephoto with 3-time magnification. Excellent for taking either black and white or color under most lighting conditions.

\$57.75 no tax

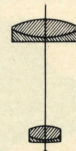
Focusing Scale—2½ feet to infinity
Aperture—f/2.5 to f/22
Filter Size—#4



1½" f/3.5 Telephoto Cine Raptor in focusing mount

Moderate speed telephoto with 3-time magnification. A more versatile lens for the advanced beginner. Long distance shots brought up close at finger-tip ease **\$41.25** no tax

Focusing Scale—5 feet to infinity
Aperture—f/3.5 to f/22
Filter Size—#4



38mm f/1.5 Telephoto Cine Raptor in focusing mount

Ultra-speed telephoto with 3-time magnification. Excellent for either black and white or color under adverse lighting conditions. Highest speed, highest quality at lowest price.....**\$67.50** no tax

Focusing Scale—3 feet to infinity
Aperture—f/1.5 to f/22
Filter Size—#5

WOLLENSAK

Wide Angle and Telephoto Attachments

These Wollensak attachments screw into the normal lens of the Bell and Howell 8 mm #220-#252 and the Kodak Brownie f/1.9 and f/2.7 lenses. They are fully color corrected . . . have full coverage . . . deliver the highest resolution without the sacrifice of contrast.

Telephoto Attachment

SPECIFICATIONS

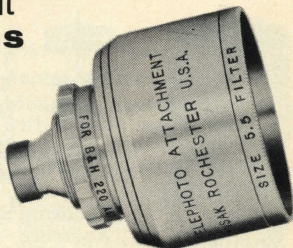
Magnification: $2\frac{1}{2}$ times

Construction: 5 elements

Filter Size: #5.5 drop-in

Speed: The same as normal lens to which it is attached.

Price: \$22.95



Wide Angle Attachment

SPECIFICATIONS

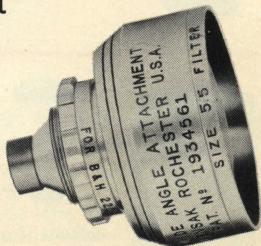
Coverage: Approx. 4 times area of normal lens

Construction: 4 elements

Filter Size: #5.5 drop-in

Speed: The same as normal lens to which it is attached.

Price: \$22.95



Finders

For Bell and Howell #220-#252 \$3.00

For Kodak Brownie f/1.9 and f/2.7 \$3.00

WOLLENSAK

8mm Cineset Assortments



Wollensak Cineset lenses are not a second line of lenses, but are highest quality Raptar lenses, known the world over. All Cine Raptar accessory lenses come complete with coated optical glass haze filters at no extra cost. It's much more economical to buy accessory lenses in Wollensak Cineset Assortments. Available for most cameras.

No. 8150-I Cineset D Mount for Standard 8mm cameras
(Illustrated above)

$1\frac{1}{2}$ " f/3.5 Telephoto Raptar fixed focus and 9mm f/2.5 Wide Angle Raptar. Complete with haze filters. **\$59.50**
tax included

No. 8155-I Cineset D Mount for Standard 8mm Cameras
 $1\frac{1}{2}$ " f/3.5 Telephoto Raptar focusing and 6.5mm f/2.5 Wide Angle Raptar. Complete with haze filters
\$79.50
tax included

No. 8160-1 Cineset D Mount for Standard 8 mm Cameras.
 1½" f/2.8 Telephoto Raptar focusing and 6.5 mm
 f/2.5 Wide Angle Raptar. Complete with haze
 filters.....**\$81.50**
tax included

**No. 8260-II Cineset for Bell & Howell Cameras Auto-8,
 172A&B**

1½" f/2.5 Telephoto Raptar focusing with #204
 finder and haze filter and 6.5mm f/1.9 Wide Angle
 Raptar with #201 finder and haze filter...**\$115.00**
tax included

**No. 8365-III Cineset for Bell & Howell Cameras 134TA,
 Tri-8**

1½" f/2.5 Telephoto Raptar focusing with #208
 finder and haze filter and 6.5mm f/1.9 Wide Angle
 Raptar with #205 finder and haze filter...**\$115.00**
tax included

**No. 8270-II Cineset for Bell & Howell Cameras Auto-8,
 172A&B**

6.5mm f/1.9 Wide Angle Raptar with #201 finder
 and haze filter.....**\$62.50**
tax included

**No. 8375-III Cineset for Bell & Howell Cameras 134TA,
 Tri-8**

6.5mm f/1.9 Wide Angle Raptar with #205 finder
 and haze filter.....**\$62.50**
tax included

**No. 8280-II Cineset for Bell & Howell Cameras Auto-8,
 172A&B**

1½" f/3.5 Telephoto Raptar focusing with #204
 finder and haze filter.....**\$43.50**

**No. 8385-III Cineset for Bell & Howell Cameras 134TA,
 Tri-8**

1½" f/3.5 Telephoto Raptar focusing with #208
 finder and haze filter.....**\$43.50**

**No. 8290-II Cineset for Bell & Howell Cameras Auto-8,
 172A&B**

1½" f/2.5 Telephoto Raptar focusing with #204
 finder and haze filter.....**\$59.50**

**No. 8395-III Cineset for Bell & Howell Cameras 134TA,
 Tri-8**

1½" f/2.5 Telephoto Raptar focusing with #208
 finder and haze filter.....**\$59.50**

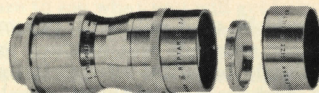
**No. 8200-II Cineset for Bell & Howell Cameras Auto-8,
 172A&B**

1½" f/1.5 Telephoto Raptar focusing with #204
 finder and haze filter.....**\$65.50**

**No. 8300-III Cineset for Bell & Howell Cameras 134TA,
 Tri-8**

1½" f/1.5 Telephoto Raptar focusing with #208
 finder and haze filter.....**\$65.50**

Optical Glass, Coated Filters



No adapter; filters fit behind lens hood.

Wollensak filters are precision calibrated of solid-colored glass—not dyed gelatin between glass. Every piece of glass is carefully selected for shade and purity . . . carefully ground flat—no wedges—and polished to the same optical surface quality as Wollensak lenses. All Wollensak filters are WOCOTED to eliminate bouncing light, flare, etc.

Wollensak all-glass filters are perfectly stable under heat or cold, in tropical humidity or desert aridness. They do not change color. Nothing to deteriorate or to distort image.

Filters are carefully edged and assembled in self-contained metal rings . . . protection against chipping and breakage . . . assurance of perfect alignment in your lens. Mounts are engraved for easy identification.

HAZE FILTERS: For use with color film because ultra-violet light records as violet. They are recommended particularly when making distant scenes, in shadows, and at high altitudes where excess ultra-violet light prevails. They are colorless and require no change in exposure. It is recommended a haze filter always be used with daylight Kodachrome.

YELLOW FILTERS (Y-2, Y-4): For use with either ortho or pan film. A yellow filter darkens a blue sky, brings out the white clouds and foreground objects. It produces better contrast, and a more natural reproduction . . . is the most frequently used "sky" filter.

GREEN FILTER: Can be used only with pan films, in photographing landscapes, gardens, flower scenes where heavy masses of foliage dominate the picture. The green filter lightens the greens, improves the detail, which is usually lost on black and white film.

RED FILTER: Should be used only with pan or infra-red films. In outdoor scenes it will produce pronounced contrast, startlingly beautiful effects. It lightens red tremendously, darkens most of the other colors except orange and yellow, which it lightens slightly. It will sharply cut through atmospheric haze, strengthens distant detail. Moonlight effects obtainable by using a red filter and sun shade and shooting directly into the sun.

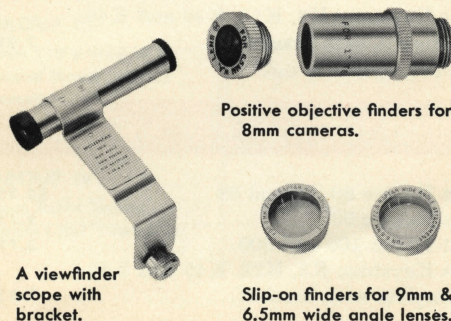
NEUTRAL DENSITY FILTERS (ND-2X, ND-4X): These filters reduce light intensity. Should be used under extremely bright conditions (such as photographs on the water) to avoid overexposure.

CHROME A FILTER: For use with Kodachrome A (indoor, tungsten film) for photographing in daylight outdoors. Eliminates the necessity for changing to outdoor-type Kodachrome film.

COLOR	SIZE 4	4.5	5	5.5	6
HAZE	\$2.50	\$2.75	\$3.50	\$4.00	\$4.50
YELLOW (Y-2, Y-4) GREEN RED NEUTRAL DENSITY (ND-2X, ND-4X) CHROME A	\$3.00	\$3.25	\$4.00	\$4.50	\$5.00

WOLLENSAK Finders

Since the angle of view covered by wide angle or telephoto lenses is different from that covered by normal focus lenses, special compensating viewfinders must be used if you are to see what you will get in your movies. Wollensak furnishes compensating finders for those cameras with provisions to accept accessory finders. These can be the slip-on type which slide over existing finder, a complete viewfinder scope furnished with a bracket, or, as in the case of some Bell & Howell cameras, positive finders.



A viewfinder scope with bracket.

Positive objective finders for 8mm cameras.

Slip-on finders for 9mm & 6.5mm wide angle lenses.

FINDERS FOR BELL & HOWELL CAMERAS

These Wollensak finders are brass, chrome plated with coated objectives . . . a precision-made, long-life instrument.

BELL AND HOWELL 8MM AUTO 8—172A—172B CAMERAS:

Objective Finder for 6.5mm Wide Angle Lens	\$6.50
Objective Finder for 9mm Wide Angle Lens	6.50
Objective Finder for 1" Telephoto Lens . . .	6.50
Objective Finder for 1½" Telephoto Lens . .	6.50

BELL AND HOWELL 8MM TRI LENS AND 134TA CAMERAS:

Objective Finder for 6.5mm Wide Angle Lens	\$6.50
Objective Finder for 9mm Wide Angle Lens	6.50
Objective Finder for 1" Telephoto Lens . . .	6.50
Objective Finder for 1½" Telephoto Lens . .	6.50

FINDERS FOR 6.5mm WIDE ANGLE LENS

To fit Revere 60, 70 and 88	\$3.25
To fit Revere 99	3.75
To fit DeJur 100, 300, 400 and 700	3.75
To fit Keystone K8, K22, K40 and K45 (complete with bracket)	7.95

FINDERS FOR 9mm WIDE ANGLE LENS

To fit Revere 60, 70 and 88	\$3.25
To fit Revere 99	3.75
To fit DeJur 100 and 300	3.75
To fit Keystone K8, K22, K40 and K45 (complete with bracket)	7.95

WOLLENSAK

8mm Cine Raptar Lenses

FIT THE FOLLOWING CAMERAS:

GROUP I

8mm Standard D Mount
(.484") Camera.

Ampro
Bolex H8-B8-C8
De Jur
Keystone
Kodak Reliant
Revere
Wollensak

GROUP II

8mm Bell & Howell
Thread Mount (.590")
Cameras.

Bell & Howell Auto 8
Magazine
Bell & Howell Model
172A & 172B (Magazine)
Bell & Howell Model
134V & 134W

GROUP III

8mm Bell & Howell
Thread Mount (.298")
Cameras.

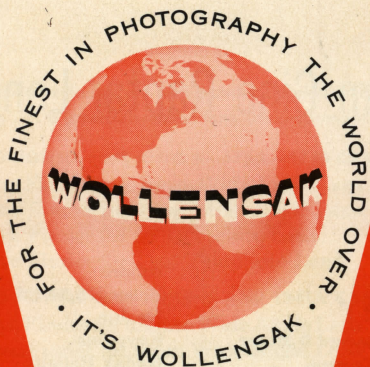
Bell & Howell Tri Lens
Bell & Howell 134TA

GROUP IV

8mm Bolex Thread
Mount (.307") Cameras.

Bolex L8

Prices of lenses for the above cameras are the same regardless of model or make. Specify group number when ordering lenses.



WOLLENSAK

OPTICAL COMPANY • ROCHESTER, N.Y.

AL HOFFMAN CAMERA & JEWELRY CO.

5965 ATLANTIC BLVD.

2 BLOCKS SOUTH OF SLAUSON

MAYWOOD, CALIF

LUDlow 7-9127 - LUDlow 2-8025